

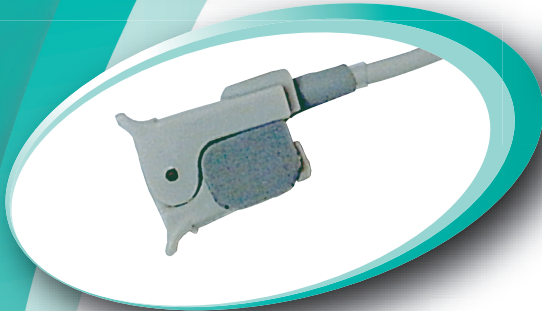
# Pulse Oximeter Sensors



## **Universal Hinged Sensor**

The Universal Hinged Sensor is suitable for multiple patient use with all Mediaid pulse oximeters. It is designed to fit a wide range of digits from a small finger to the adult great toe.

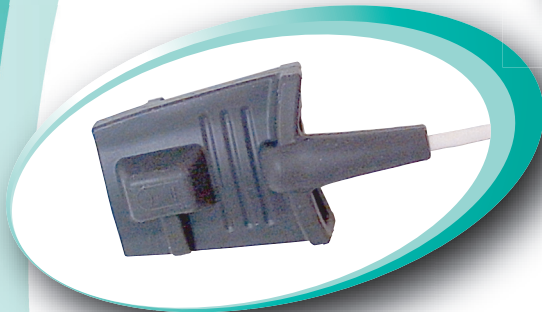
- RJ12 Connector  
REF/PN POX020-100 (30in / 76cm cable)  
REF/PN POX020-105 (96in / 2.4m cable)
- Compushield® Connector  
REF/PN POX050-100S (30in / 76cm cable)  
REF/PN POX050-105S (96in / 2.4m cable)



## **Small Finger Clip Sensor**

The Mediaid Small Finger Clip Sensor is suitable for multiple patient use. It is designed to use for children between age 2 to 10 years.

- Compushield® Connector  
REF/PN POX050-115S (96in / 2.4m cable)



## **Soft Sensors**

Mediaid Soft Sensors are designed for multiple patient use with all Mediaid pulse oximeters. Soft sensors can be used for either spot check or long term monitoring. These sensors tolerate a moderate amount of patient activity. Two types accommodate a large range of patients from adults to children as young as age 4.

### **Adult Soft Sensor**

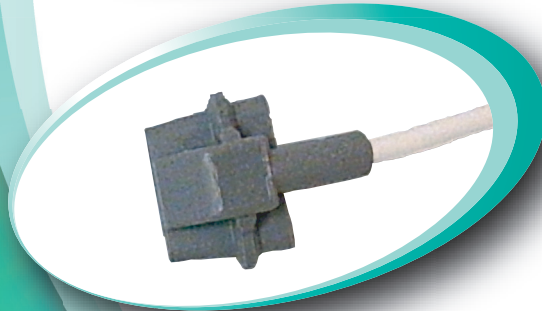
Reusable sensor for the fingers of large adults.

- RJ12 Connector  
REF/PN POX020-400 (96in / 2.4m cable)
- Compushield® Connector  
REF/PN POX050-400S (96in / 2.4m cable)

### **Pediatric Soft Sensor**

Reusable sensor for the fingers of children from age 4 up to those of small adults.

- RJ12 Connector  
REF/PN POX020-310 (96in / 2.4m cable)
- Compushield® Connector  
REF/PN POX050-310S (96in / 2.4m cable)



# Pulse Oximeter Sensors



## "Y" Sensor

The Mediaid "Y" Sensor is a multisite sensor and can be used on a wide range of patients, from adults to neonatal.

- Compushield® connector  
REF/PN POX050-531 (96 in/ 2.4 m cable)
- RJ12 connector  
REF/PN POX020-530 (96 in/ 2.4 m cable)
- Replaceable Foot Wraps  
Foam adhesive wrap:  
Small REF/PN POX025-350  
Medium REF/PN POX025-355  
Large REF/PN POX025-360



## Earlobe Sensor

The Earlobe Sensor is intended for use on patients whom have poor peripheral circulation or when it is not convenient to use a finger sensor. It is especially useful during treadmill tests or when patient motion is anticipated.

- RJ12 Connector  
REF/PN POX020-710 (96 in/ 2.4 m cable)
- Compushield® Connector  
REF/PN POX050-710S (96 in/ 2.4 m cable)



## Semi-Disposable Sensor

### Adult R-Adhesive Sensor

This reusable continuous monitoring sensor is ideal for the thumb finger of adults and ships with 25 adhesives.

- RJ12 Connector  
REF/PN POX020-905 (96 in/ 2.4 m cable)
- Adhesives  
REF/PN POX025-205 (100/ pkg)

### Pediatric R-Adhesive Sensor

This reusable continuous monitoring sensor is ideal for the foot of children under the age of 5 and ships with 25 adhesives.

- RJ12 Connector  
REF/PN POX020-820 (96 in/ 2.4 m cable)
- Adhesives  
REF/PN POX025-155 (100/ pkg)
- Compushield® Connector  
REF/PN POX050-820S (96 in/ 2.4 m cable)



## Disposable Sensor

The Mediaid Disposable Sensor is made of microfoam tape and has a 30 inch length cable with an RJ12 connector. It is for use with all Mediaid oximeters and monitors, connecting directly to the 300 and 500 series oximeters and with an adapter to the 900 series monitors. They are packaged 24/ box and are available in four sizes:

- Adult Adhesive Disposable Sensor connector REF/PN POX020-950 (18 in/ 45 cm cable)
- Pediatric Adhesive Disposable Sensor connector REF/PN POX020-960 (18 in/ 45 cm cable)
- Infant Adhesive Disposable Sensor connector REF/PN POX020-970 (36 in/ 90 cm cable)
- Neonatal Adhesive Disposable Sensor connector REF/PN POX020-980 (36 in/ 90 cm cable)
- Compushield® to RJ12 Adapter cable REF/PN POX055-610S (72 in/ 1.8 m cable)

**17517 Fabrica Way, Suite H; Cerritos, CA 90703 USA**

**p 714.367.2848 f 714.367.2852**

**[www.mediaidinc.com](http://www.mediaidinc.com) [info@mediaidinc.com](mailto:info@mediaidinc.com)**